

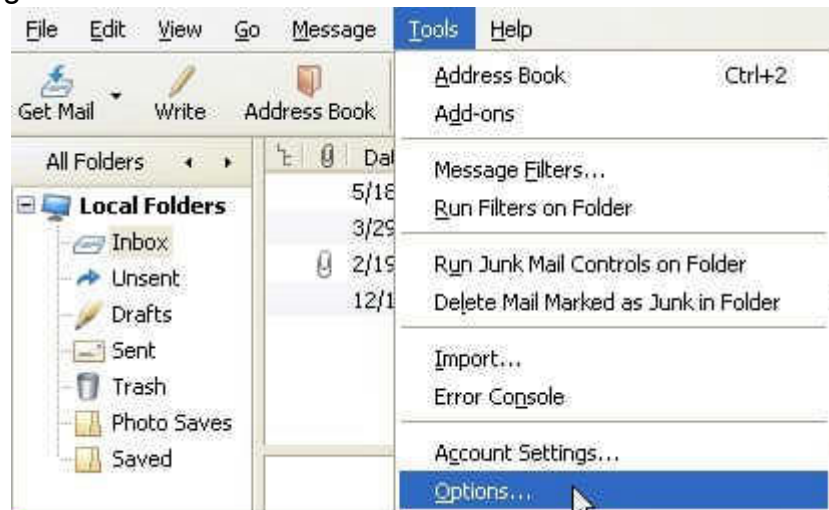
Thunderbird 2.0 Released Spam has been a growing problem. While we filter a great deal of spam from known attackers, you might want to use a program that further filters spam from coming into your inbox.

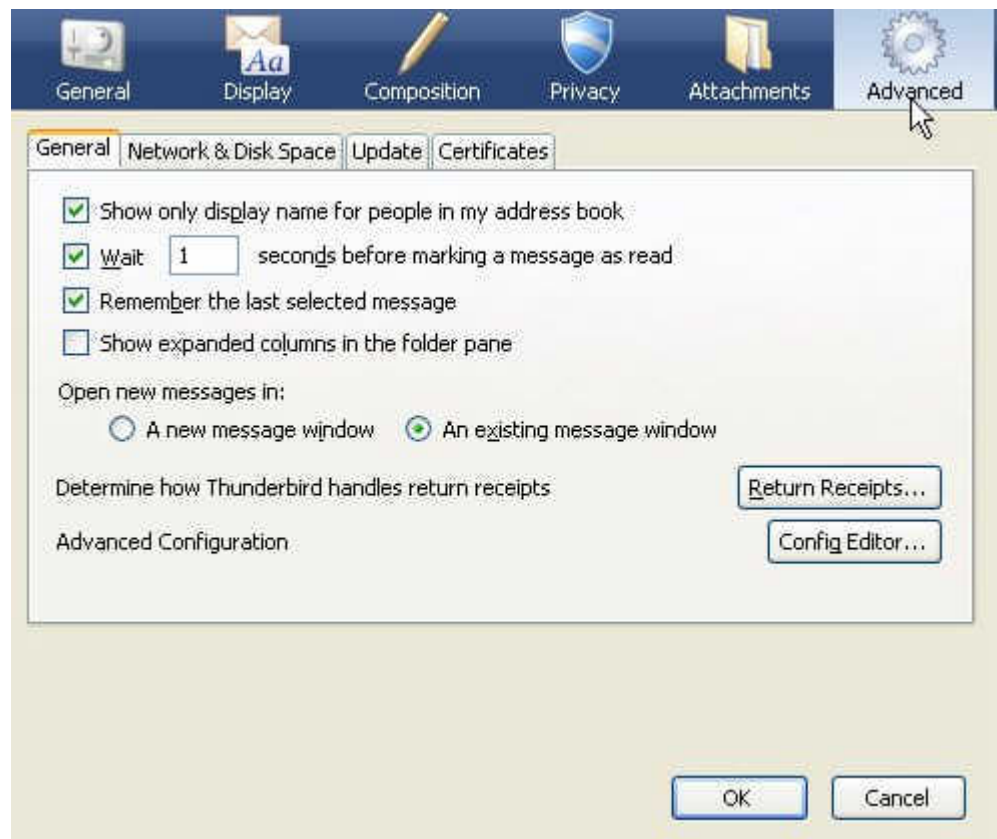
Earlier versions of Mozilla Thunderbird were not compatible with many servers, but with this new release and a few steps you can set up this e-mail client and enjoy a cleaner inbox.

Setting up the new release for Mozilla Thunderbird, it takes a few steps. With the learning spam filter embedded in Thunderbird, you can enjoy a mail system with less spam. Each step will include a graphical reference to the step you need to take.

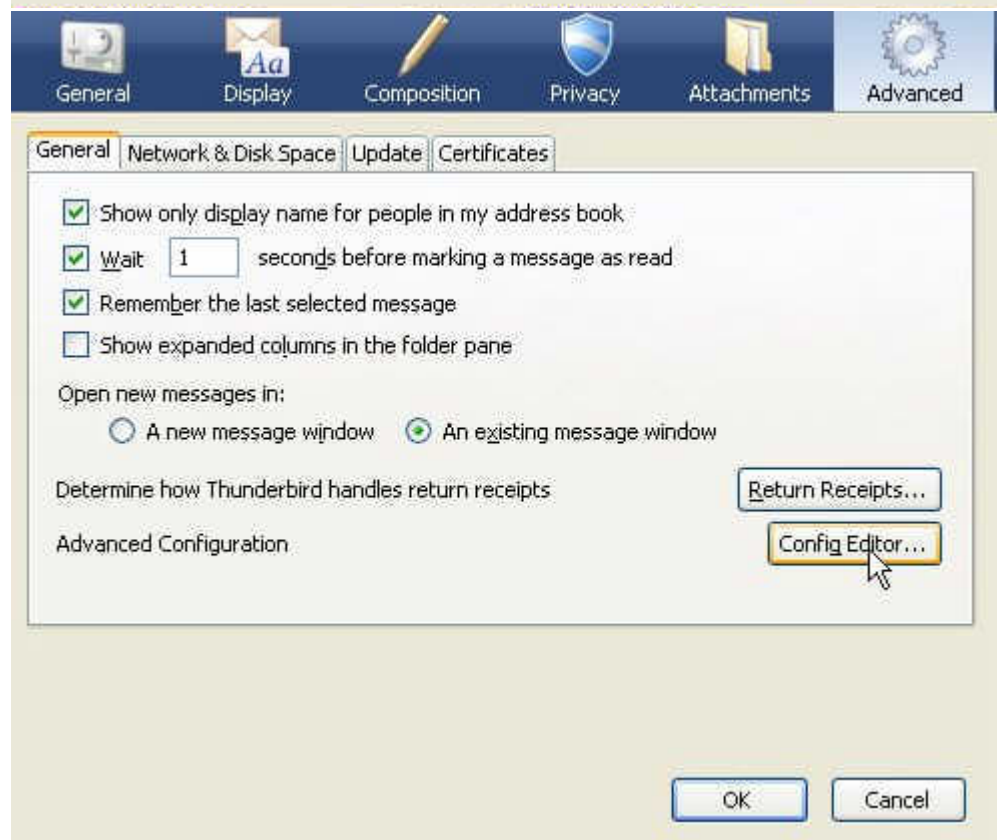
First you need to download and install [Thunderbird](#) on your system. After installing comes the adjustment required to retrieve mail from this server. If this is the first time installing Thunderbird, it should ask if you want to import any other mail program settings. Saying yes to this will allow your mail to be imported along with your address book and mail setting.

Now you're ready to make the adjustment to allow the mail to work with this secure server. Go to tools and select the options. Next Steps





A multi-tab dialog box should appear next.



The Config Editor is the next button to select.

The next box to pop up is the Configuration Editor. This is where you need to be cautious in the area where you see filter type " mail.smtp " (without the quotes) and you'll be in the zone of the configuration editor that you need to be.

Filter: mail.smtp

Preference Name	Status	Type	Value
mail.smtp.defaultserver	user set	string	smtp2
mail.smtp.ssl	default	integer	0
mail.smtp.useMatchingDomainServer	default	boolean	false
mail.smtp.useMatchingHostNameServer	default	boolean	false
mail.smtpserver.default.auth_method	default	integer	1
mail.smtpserver.default.trySecAuth	default	boolean	true
mail.smtpserver.default.try_ssl	default	integer	0
mail.smtpserver.smtp1.auth_method	user set	integer	1

Next, right click with your mouse and the hidden menu will appear. Select "New", "String" Another dialog box should open, "Enter the Preference Name"

Filter: mail.smtp

Preference Name	Status	Type
mail.smtp.defaultserver	user set	string
mail.smtp.ssl	default	integ
mail.smtp.useMatchingDomainServer	default	boole
mail.smtp.useMatchingHostNameServer	default	boole
mail.smtpserver.default.auth_method	default	integ
mail.smtpserver.default.trySecAuth	default	boole
mail.smtpserver.default.try_ssl	default	integ
mail.smtpserver.smtp1.auth_method	user set	inte
mail.smtpserver.smtp1.description	user set	strin
mail.smtpserver.smtp1.hello_argument	user set	strin
mail.smtpserver.smtp1.hostname	user set	strin
mail.smtpserver.smtp1.port	user set	inte
mail.smtpserver.smtp1.try_ssl	user set	boole

Context menu for **mail.smtpserver.smtp1.hello_argument**:

- Copy Name
- Copy Value
- New**
 - String**
 - Integer
 - Boolean
- Modify
- Reset

This is where you type in the following phrase " mail.smtpserver.smtp1.hello_argument " and click ok

Enter the preference name

mail.smtpserver.smtp1.hello_argument

OK Cancel

The next dialog box will show the phrase you entered as the header, and you now want to enter your computer name with no dots (periods).

mail.smtpserver.smtp1.hello_argument

laptop

OK Cancel

You can see I used "laptop" for my personal system. **It's important that you don't use a dot-com name or ip number here.** Then is a matter of clicking all the OK until your back to the main screen and ready to send mail.